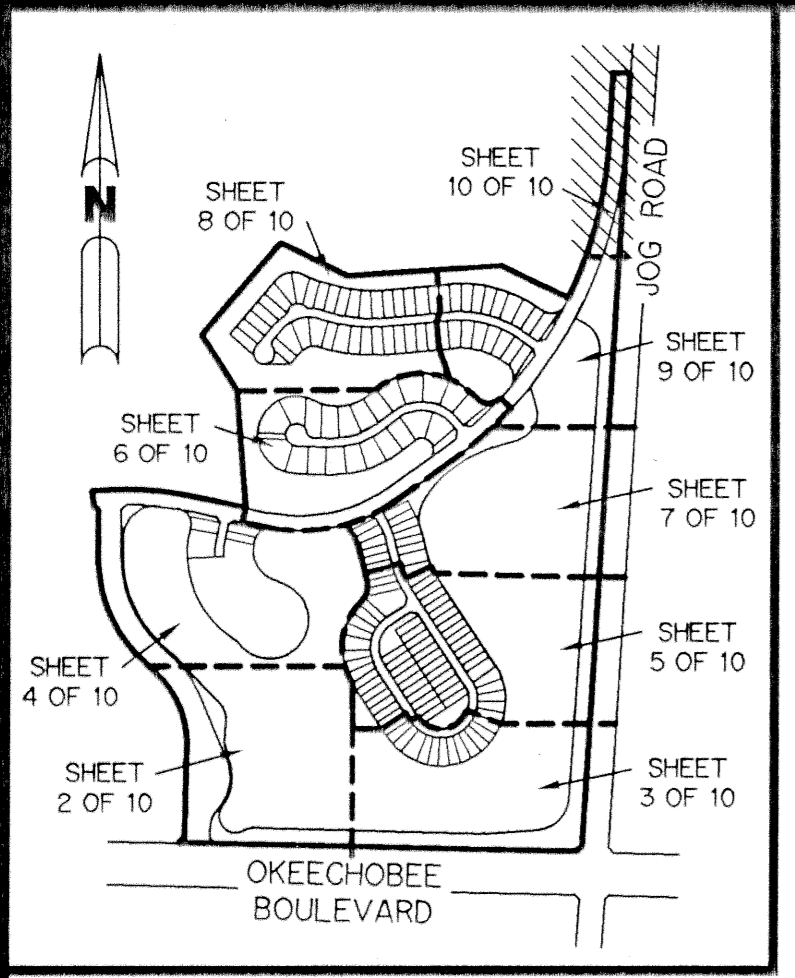


# RIVERWALK - PLAT ONE

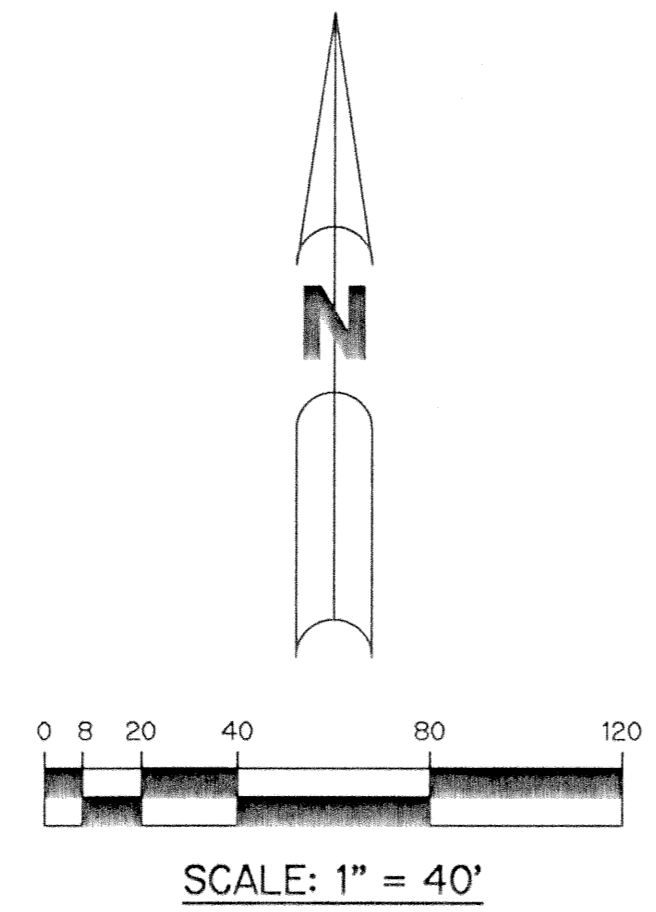
A PARCEL OF LAND LYING IN SECTION 21, TOWNSHIP 43 SOUTH,  
RANGE 42 EAST, CITY OF WEST PALM BEACH,  
PALM BEACH COUNTY, FLORIDA.

SHEET 10 OF 10 JANUARY, 1995

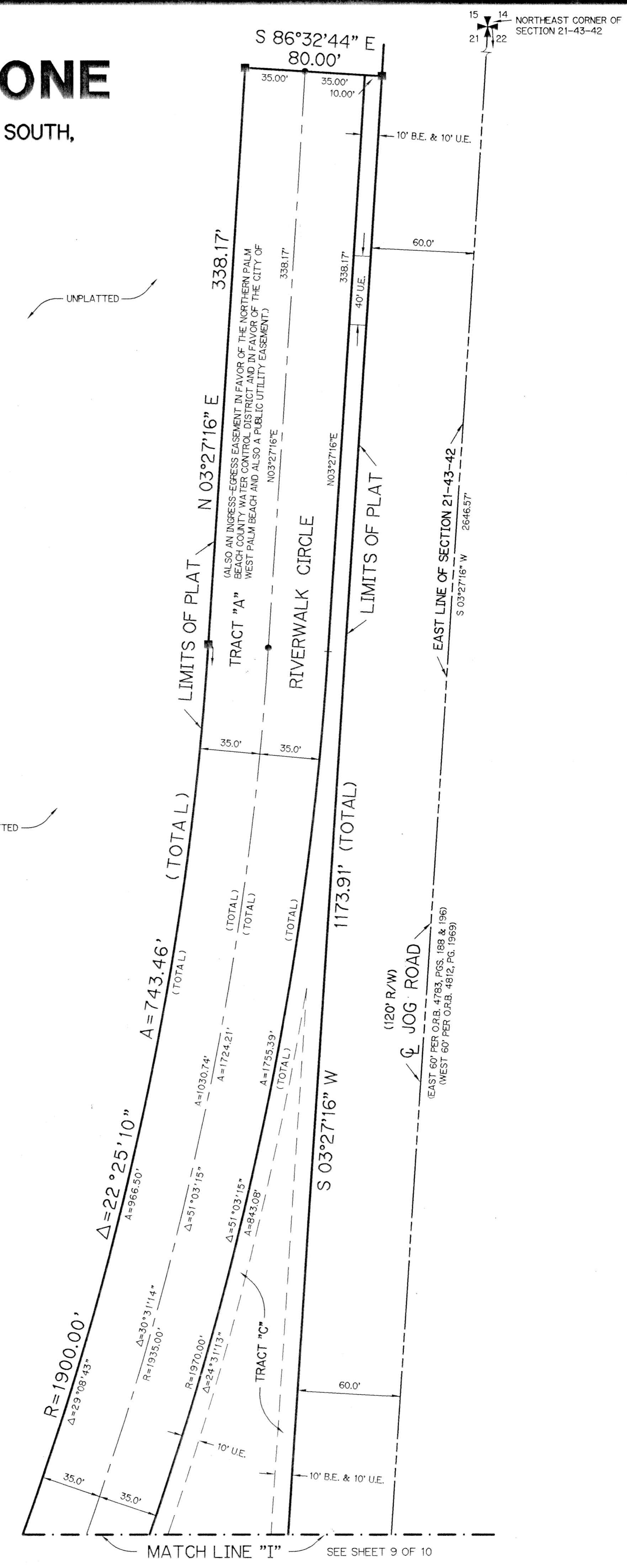


KEY MAP  
NOT TO SCALE

- LEGEND:**
- - PERMANENT REFERENCE MONUMENT, PLS #4213
  - - PERMANENT CONTROL POINT, PLS #4213
  - Δ - DELTA ANGLE
  - A - ARC LENGTH
  - B.E. - BUFFER EASEMENT
  - D.E. - DRAINAGE EASEMENT
  - L.M.A.E. - LAKE MAINTENANCE ACCESS EASEMENT
  - L.M.E. - LAKE MAINTENANCE EASEMENT
  - L.W.D.D. - LAKE WORTH DRAINAGE DISTRICT
  - N.R. - NOT RADIAL
  - N.T.S. - NOT TO SCALE
  - O.R.B. - OFFICIAL RECORD BOOK
  - P.B. - PLAT BOOK
  - R.E. - RIVERWALK EASEMENT
  - P.G.S. - PAGES
  - P.L.S. - PROFESSIONAL LAND SURVEYOR
  - R - RADIUS
  - R/W - RIGHT-OF-WAY
  - S.T. - SURVEY TIE
  - U.E. - UTILITY EASEMENT
  - |— - INDICATES ZERO LOT LINE
  - X— - INDICATES COMMON LOT LINE



THIS INSTRUMENT PREPARED BY  
PERRY C. WHITE P.L.S. 4213 STATE OF FLORIDA  
LAWSON, NOBLE AND ASSOCIATES, INC.  
ENGINEERS PLANNERS SURVEYORS  
WEST PALM BEACH, FLORIDA



VISTA CENTER OF PALM BEACH  
PLAT NO. 3  
P.B. 68, PGS. 128-134

VISTA CENTER OF PALM BEACH  
PLAT NO. 3  
P.B. 68, PGS. 128-134

SUBDIVISION \* Riverwalk - Plat One  
BOOK 74 PAGE 146  
FLOOD ZONE FLOOD MAP #  
QUAD # ZONING  
SE ZIP CODE  
PUD NAME C/WPS